

SOLENT LOCATION MAP 2019

Produced by Inspired Media, publishers of the Solent Handbook & Directory and SolentHandbook.com
© Inspired Media 2019 www.SolentHandbook.com

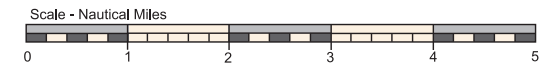
Sponsored by



KEY	Page
Beaulieu River	66-67
Bembridge Harbour	68-69
Chichester Harbour	70-74
Cowes & River Medina	75-85
Fareham	86
Keyhaven	87
Langstone Harbour	88-89
Lymington Harbour	90-93
Newtown Harbour	94
Poole Harbour	95-99
Port Solent	100
Portsmouth & Gosport	101-108
River Hamble & Warsash	109-113
Ryde Harbour	115
Southampton Water	116-122
Ventnor Haven	123-125
Wootton Creek	126-128
Yarmouth Harbour	129-130

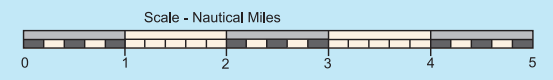
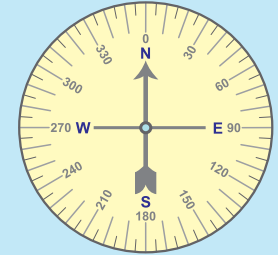
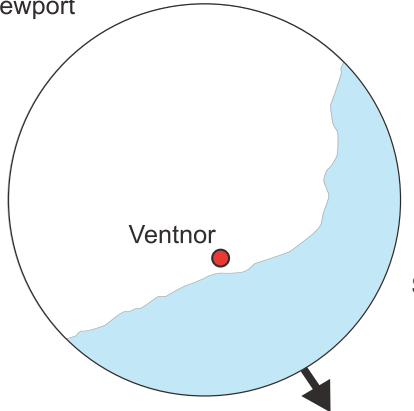
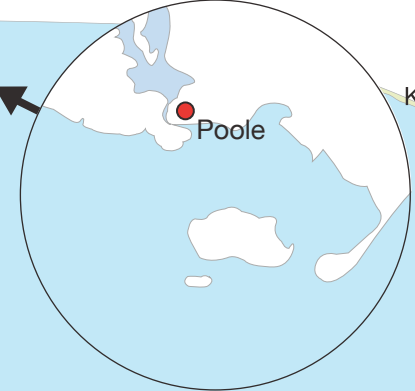
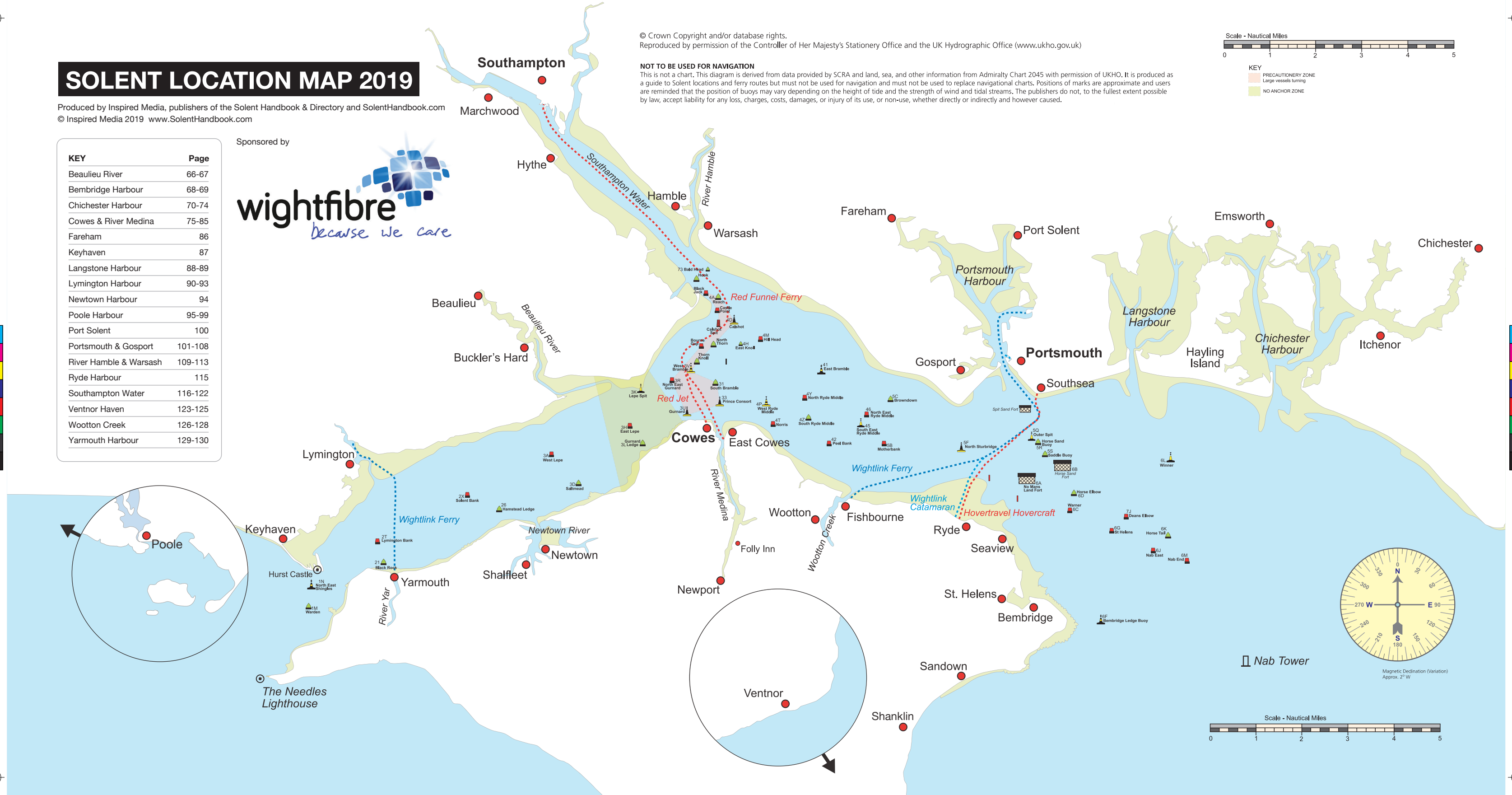
© Crown Copyright and/or database rights.
Reproduced by permission of the Controller of Her Majesty's Stationery Office and the UK Hydrographic Office (www.ukho.gov.uk)

NOT TO BE USED FOR NAVIGATION
This is not a chart. This diagram is derived from data provided by SCRA and land, sea, and other information from Admiralty Chart 2045 with permission of UKHO. It is produced as a guide to Solent locations and ferry routes but must not be used for navigation and must not be used to replace navigational charts. Positions of marks are approximate and users are reminded that the position of buoys may vary depending on the height of tide and the strength of wind and tidal streams. The publishers do not, to the fullest extent possible by law, accept liability for any loss, charges, costs, damages, or injury of its use, or non-use, whether directly or indirectly and however caused.



KEY

- PRECAUTIONARY ZONE
- Large vessels turning
- NO ANCHOR ZONE



BUOY RACER 2019

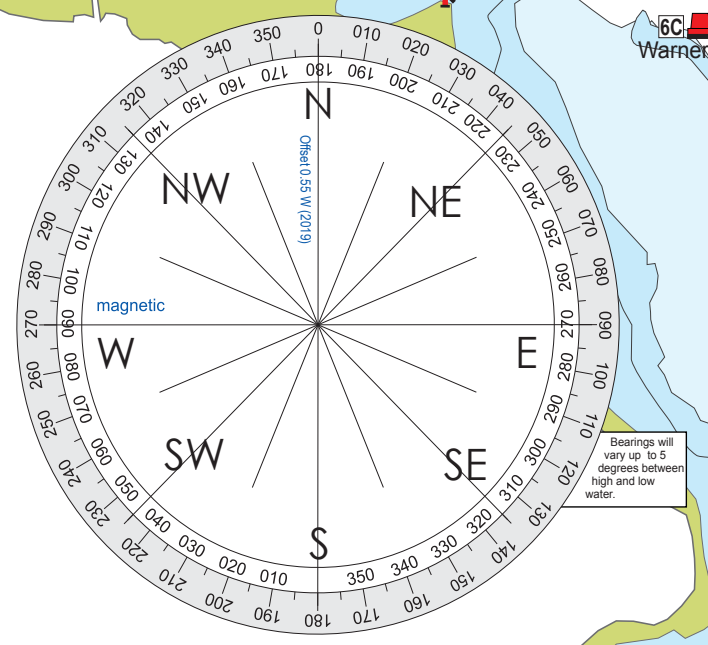
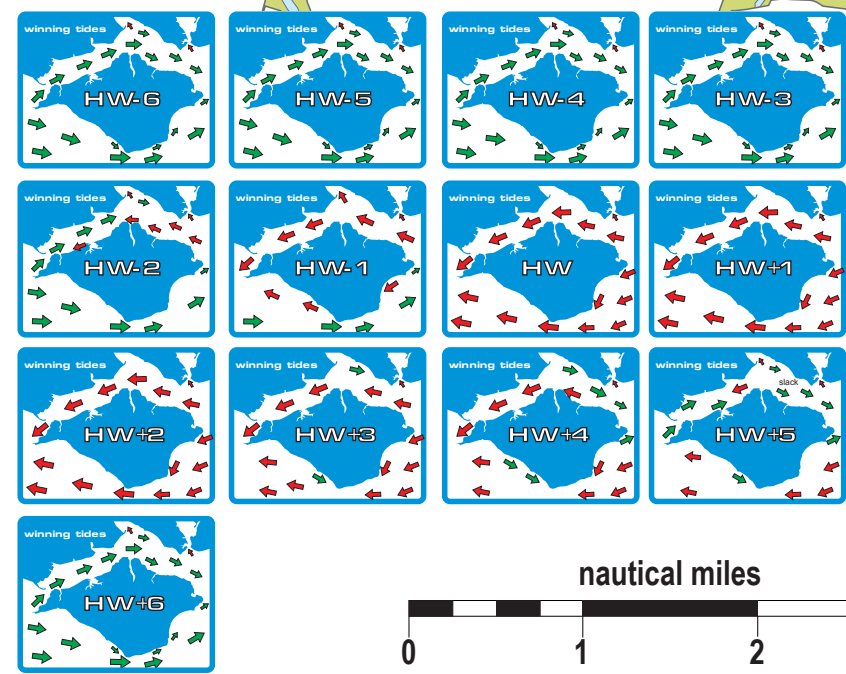
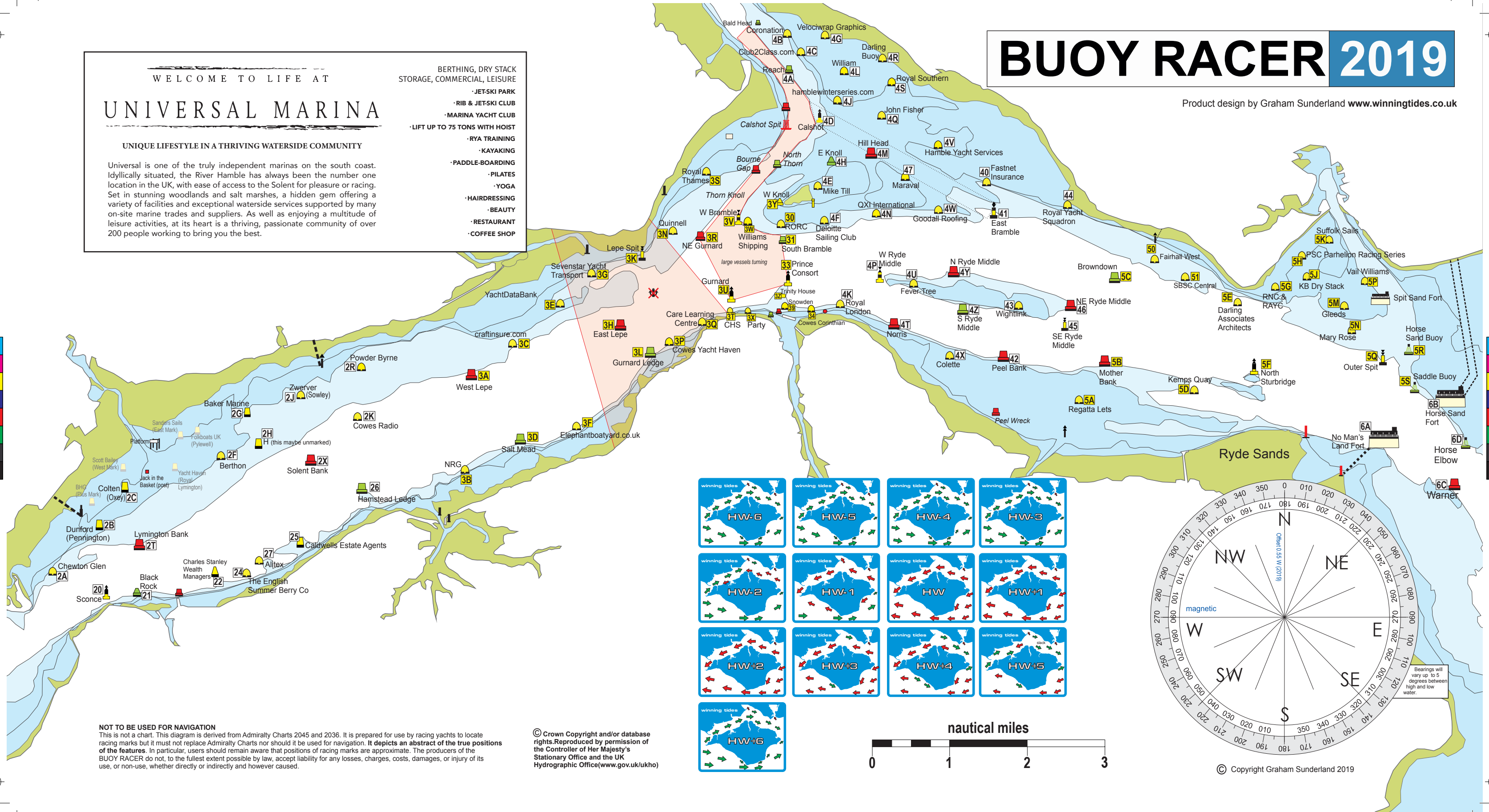
Product design by Graham Sunderland www.winningtides.co.uk

WELCOME TO LIFE AT UNIVERSAL MARINA

UNIQUE LIFESTYLE IN A THRIVING WATERSIDE COMMUNITY

Universal is one of the truly independent marinas on the south coast. Idyllically situated, the River Hamble has always been the number one location in the UK, with ease of access to the Solent for pleasure or racing. Set in stunning woodlands and salt marshes, a hidden gem offering a variety of facilities and exceptional waterside services supported by many on-site marine trades and suppliers. As well as enjoying a multitude of leisure activities, at its heart is a thriving, passionate community of over 200 people working to bring you the best.

- BERTHING, DRY STACK STORAGE, COMMERCIAL, LEISURE
- JET-SKI PARK
- RIB & JET-SKI CLUB
- MARINA YACHT CLUB
- LIFT UP TO 75 TONS WITH HOIST
- RYA TRAINING
- KAYAKING
- PADDLE-BOARDING
- PILATES
- YOGA
- HAIRDRESSING
- BEAUTY
- RESTAURANT
- COFFEE SHOP



NOT TO BE USED FOR NAVIGATION
 This is not a chart. This diagram is derived from Admiralty Charts 2045 and 2036. It is prepared for use by racing yachts to locate racing marks but it must not replace Admiralty Charts nor should it be used for navigation. It depicts an abstract of the true positions of the features. In particular, users should remain aware that positions of racing marks are approximate. The producers of the BUOY RACER do not, to the fullest extent possible by law, accept liability for any losses, charges, costs, damages, or injury of its use, or non-use, whether directly or indirectly and however caused.

© Crown Copyright and/or database rights. Reproduced by permission of the Controller of Her Majesty's Stationary Office and the UK Hydrographic Office (www.gov.uk/ukho)

© Copyright Graham Sunderland 2019